

### Real Estate Auction

#### 3018 Roger's Chapel Road, Jonesboro, AR

#### 3 Tracts Available



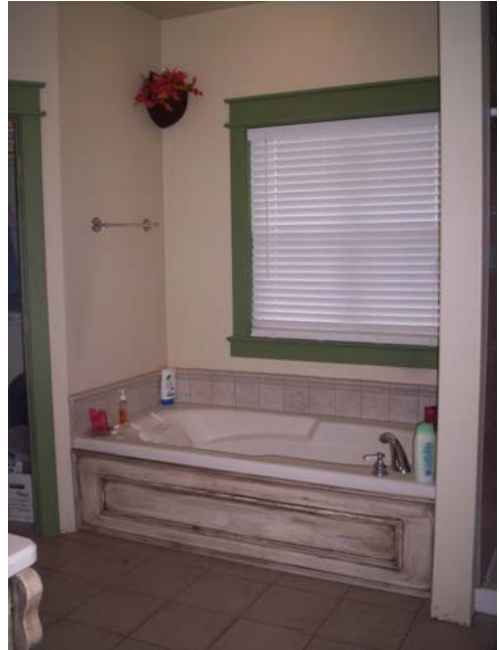
|                                   |  |   |                             |
|-----------------------------------|--|---|-----------------------------|
| <b>Date:</b>                      | Saturday, March 15 <sup>th</sup> , 2008 at 10 am.  |   |                             |
| <b>Inspection Time:</b>           | Open House March 9 <sup>th</sup> 3:00 pm to 4:30 pm<br>Then By appointment only with Tom Rhoads  |   |                             |
| <b>Location &amp; Directions:</b> | 3018 Roger's Chapel Road, Jonesboro, Arkansas<br><br>Directions: From Hwy 18 East, past Commerce Drive, left on Roger's Chapel Road. From Hwy 49 North, right on CR 928 or Lester Road, over tracks, right on Roger's Chapel Road.   |   |                             |
| <b>Description:</b>               | <b>Tract #1</b><br>3400 square foot home<br>5 Bedrooms & 3 1/2 Baths<br>40x80 Shop<br>2.14 Acres   | <b>Tract #2</b><br>22 Acres currently<br>platted out as<br>"Heritage Acres" | <b>Tract #3</b><br>43 Acres |
| <b>Terms:</b>                     | <ul style="list-style-type: none"> <li>○ HAVE FINANCING READY!</li> <li>○ 10% Buyers Commission</li> <li>○ 10% Down day of Auction non-refundable w/balance paid at Closing</li> <li>○ Closing to be on or before March 28, 2008 at the office of J. Robin Nix Atty.</li> <li>○ AS-IS &amp; WHERE-IS ONLY</li> </ul> |   |                             |
| <b>Referring Agent:</b>           | TOM RHOADS #AALB#250   |   |                             |
| <b>For More Info Contact:</b>     | TOM RHOADS<br>CELL: 870.375.9181<br>tom.rhoads@crye-leike.com  |   |                             |



*All announcements made on auction day take precedence over printed material. Information deemed reliable, but not guaranteed.*  
Crye-Leike Firm License Numbers: TN License #2774 - MS License #809F; #1473, #3758, #4923; #ACNR002328



*All announcements made on auction day take precedence over printed material. Information deemed reliable, but not guaranteed.*  
Crye-Leike Firm License Numbers: TN License #2774 - MS License #809F; #1473, #3758, #4923; #ACNR002328



*All announcements made on auction day take precedence over printed material. Information deemed reliable, but not guaranteed.*  
Crye-Leike Firm License Numbers: TN License #2774 - MS License #809F; #1473, #3758, #4923; #ACNR002328



*All announcements made on auction day take precedence over printed material. Information deemed reliable, but not guaranteed.*  
Crye-Leike Firm License Numbers: TN License #2774 - MS License #809F; #1473, #3758, #4923; #ACNR002328