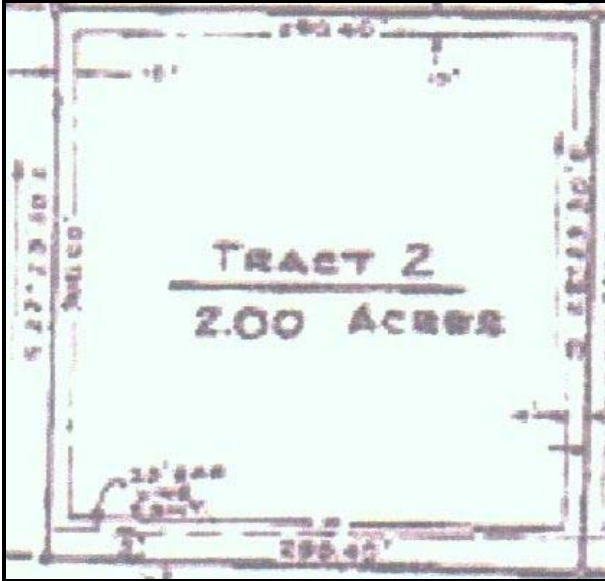


Auction - 2 ACRE COMMERCIAL LOT, CONSIGNMENT SALE



Date:	Jun 28, 10:00 AM
Location & Directions:	<p>Tract 2 Mt. Pleasant Pike Mt. Pleasant, TN</p> <p>From Columbia, take Hwy 243 South (Mt. Pleasant Pike) approx. 7 mi. to lot on left. From downtown Mt. Pleasant, take Hwy. 243 North approx. 2 mi. just past Maury County Airport to lot on right.</p>
Description:	<p><u>COMMERCIAL LOT:</u> (Owner/Agent) Level with 290 ft. road frontage. Great commercial 2 acre lot suitable for many uses. Super location between cities of Columbia and Mt. Pleasant.</p> <p><u>EQUIPMENT:</u> 2004 Harley Davidson Heritage Softtail Classic, 2002 Palomino Travel Trailer, 1997 Honda 400 Foreman, 1999 Honda Z50, 1989 John Deere 2755 Tractor, 1985 Honda XR350R, Early 80's 3600 Ford Tractor, 800 Ford Tractor, 5 ft. Bushhog, utility work truck, Utility trailer, 2001 Volvo triaxle 370 Cummins dump truck (good condition), Boat, Riding Mower, 5hp Craftsman high wheel weed trimmer, 2004 36 ft. 5th wheel Alfa Travel Trailer with 3 super slides, Polaris 4 wheeler and much more to be consigned.</p>

TO CONSIGN ITEMS: Call, John Brown 931-446-0797 or Eric Hill 931-446-4916

Terms:

- Real Estate 10% earnest money day of sale. Balance due on or before July 28 2008. Equipment cash or good check day of sale. Any announcements made day of sale take precedence over previous advertisement and printed matter.

Referring Agent:

For More Info Contact:

Crye-Leike Auctioneers 931-5400-8400 1118 Nashville Hwy., Columbia, TN 38401

CRYE-LEIKE of Naxhville, Inc. Firm Lic. #3926

John E. Brown

James E. Ables

James E. Hill

Auctioneer

Auctioneer

App. Auctioneer

Lic. #5900

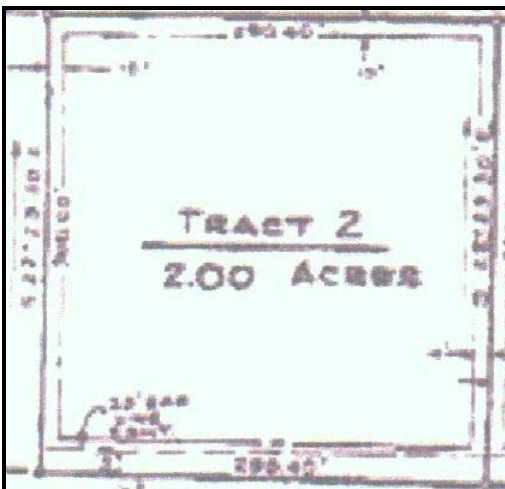
Lic. #2050

Lic. #6060

931-446-0797

931-540-8400

931-540-8400



All announcements made on auction day take precedence over printed material. Information deemed reliable, but not guaranteed.
Crye-Leike Firm License Numbers: TN License #2774 - MS License #809F; #1473, #3758, #4923; #ACNR002328



All announcements made on auction day take precedence over printed material. Information deemed reliable, but not guaranteed.
Crye-Leike Firm License Numbers: TN License #2774 - MS License #809F; #1473, #3758, #4923; #ACNR002328