



3 BEDROOM BRICK HOME & PERSONAL PROPERTY

651 YOKLEY LANE PULASKI, TN 38478

ESTATE OF MARGUERITE BIRDSONG

Date:	SATURDAY APRIL 17 10:00AM
Inspection Time:	At time of sale
Location & Directions:	From Columbia take Hwy 31 South to E. Jefferson St. approx. 29 miles, turn left. Take E. Jefferson St. to Locust St. approx. .6 miles, turn left. Go .1 miles to home on left. From Lawrenceburg take Hwy. 64 East to Hwy 31 North in Pulaski approx. 18 miles. Take Hwy 31 North to E. Jefferson St. turn right. Take E. Jefferson St. to Locust St. approx. .6 miles turn left. Go .1 miles to home on left.
Description:	SCROLL DOWN TO SEE FLIER AND PHOTOS
Terms:	SEE FLYER

Referring Agent:	Carolyn Strickland and Betsa Bolden, Columbia Crye-Leike Realtors
For More Info Contact:	John E. Brown, Columbia Crye-Leike Auctioneer, Realtor 931-446-0797

AUCTION

3 Bedroom Brick Home & Personal Property Sale
651 Yokley Lane • Pulaski, TN 38478
ESTATE OF MARGUERITE BIRDSONG

Saturday, April 17th • 10:00 a.m.

DIRECTIONS: **From Columbia**, take Hwy. 31 South to E. Jefferson St. approx. 29 miles, turn left. Take E. Jefferson St. to Locust St. approx. .6 miles turn left. Go .1 miles to home on left. **From Lawrenceburg**, take Hwy. 64 East to Hwy. 31 North in Pulaski approx. 18 miles. Take Hwy 31 North to E. Jefferson St. turn right. Take E. Jefferson St. to Locust St. approx. .6 miles turn left. Go .1 miles to home on left.



3 bedroom, brick home, appliances, refrigerator, stove, washer & dryer. Private bath off master bedroom. Large closets in all rooms. Laundry room, breakfast nook in kitchen, fireplace in family room. 2 car garage, deck. Partial unfinished basement. Built in 1979 on corner spacious lot. Private fenced in backyard.

PERSONAL PROPERTY:

Antiques, china, dishes, kitchen items, silver tea set, decorative furniture, all furniture in excellent condition.

Several oriental throw rugs, art deco sofa, tailored couch, 2 high back gold velvet arm chairs, gold platform rocker recliner, 2 plush green side chairs, round glass coffee table with metal stand, radio/hi-fi cabinet, oriental cabinet, decorative drum table, decorative nested tables, hand crafted, hand decorated 1985 Jasper original secretary, curio cabinet, tea trolley, kitchen table & 4 chairs, light mahogany claw foot dining table with 4 matching chairs and 2 arm chairs, matching buffet, silver plated tea set, dishes, glassware, Taylor Smith china, service of 8 Japanese china, crystal candle holders, vases, beautiful glass electric hurricane lamps, hanging lamps, 2 small matching crystal lamps, gold oriental brass lamp, several beautiful mirrors, 4 framed oriental etched mirrors, hanging sunburst, ornate oriental pieces, oriental clock, anniversary clock, marble stand with weights, marble top plant stand, marble top table, TV, TV stand, antique telephone, decorative French Provencal dresser with mirror, matching chest, and night stand, 2 queen beds, French Provencal Bassett dresser with mirror, matching chest and night stand, white wicker headboard double bed with matching side chair, roll top desk with metal handles, luggage, leopard cloth covered metal bench, oil paintings, framed prints, globe, books, exercise bike, carpet rake, carpet sweeper, microwave, tools, Hobart electric saw, and many more items to numerous to mention.

To view items go online to www.crye-leike.com/auctions/middletnauctions.php or www.auctionzip.com

Food will be available. Tent will be provided.

TERMS: **Personal Property**, cash or good check day of sale. **Real Estate**, 10% earnest money day of sale with balance due on or before May 17, 2010. Any announcements made day of sale take precedence over previous advertisement and printed material.

Referring Agents: Carolyn Strickland and Betsa Bolden Crye-Leike Realtors



JOHN E. BROWN
Auctioneer
Lic. #5900
931-446-0797

CRYE-LEIKE
AUCTIONEERS
931-540-8400

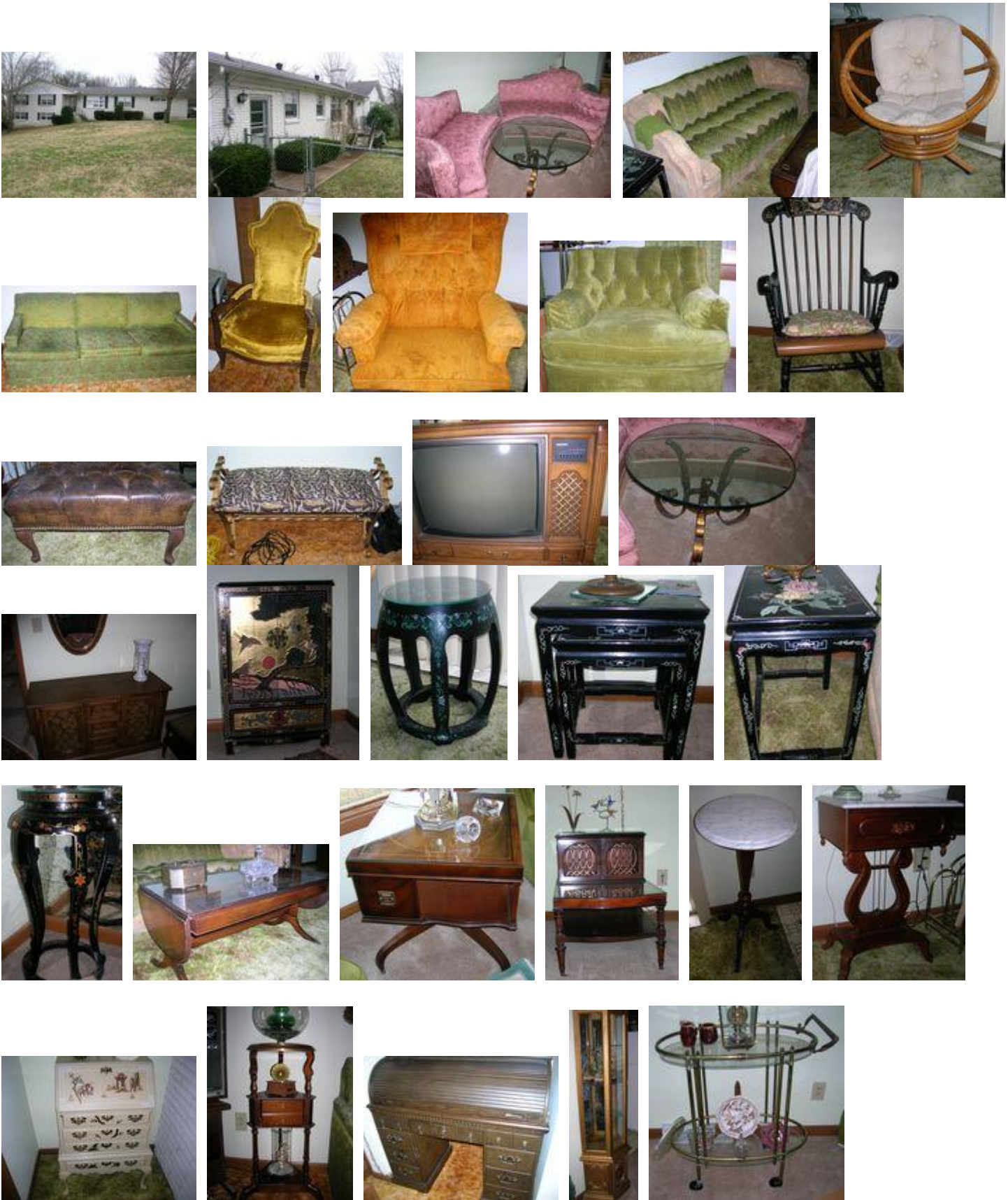
1118 Nashville Hwy., Columbia, TN 38401

CRYE-LEIKE of Nashville, Inc. Firm Lic. #3926

JAMES E. ABLES, Auctioneer, Lic. #2050
931-540-8400



JAMES E. HILL
Auctioneer
Lic. #6060
931-540-8400

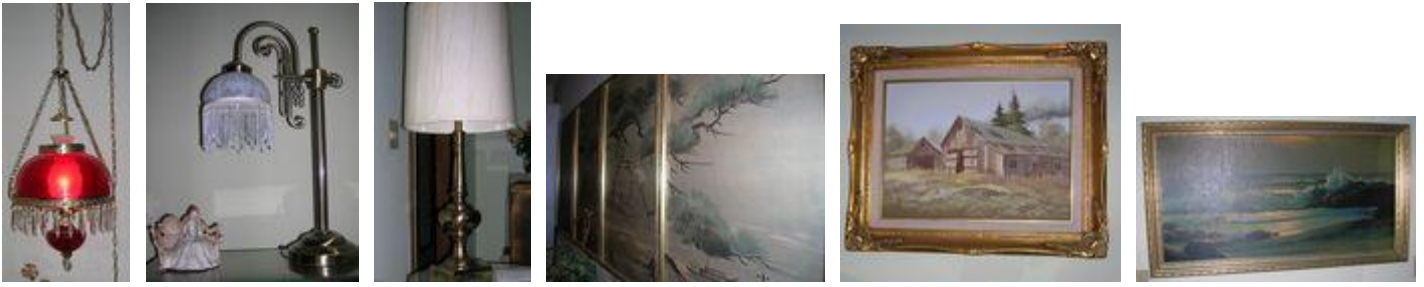


All announcements made on auction day take precedence over printed material. Information deemed reliable, but not guaranteed.
 Crye-Leike Firm License Numbers: TN License #2774 - MS License #809F; #1473, #3758, #4923; #ACNR002328



All announcements made on auction day take precedence over printed material. Information deemed reliable, but not guaranteed.

Crye-Leike Firm License Numbers: TN License #2774 - MS License #809F; #1473, #3758, #4923; #ACNR002328



All announcements made on auction day take precedence over printed material. Information deemed reliable, but not guaranteed.
Crye-Leike Firm License Numbers: TN License #2774 - MS License #809F; #1473, #3758, #4923; #ACNR002328