

**CRYE-<sup>®</sup>**  
**LEIKE**

Find more auctions at <http://auctions.crye-leike.com>

# ABSOLUTE AUCTION

**3 BEDROOM BRICK HOME • SETTLE ESTATE OF DORA ANN DAVIS  
1102 CLEARVIEW AVE. LAWRENCEBURG, TN 38464**

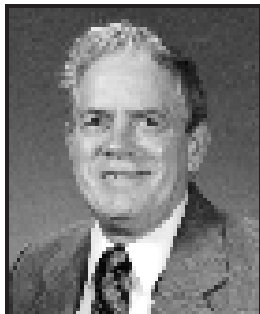
**SATURDAY, MAY 1 10:00 AM**

**Directions:** From Lawrenceburg take Hwy 43 South to Hwy 64 turn right (West). Go approx .3 miles, turn right onto Buffalo Rd. Go .6 miles, turn left onto Crescent Factory Rd. Go .3 miles, turn right onto Clearview Ave. Go .2 miles to home on the left.



3 bedroom brick, ranch style (approx. 1150 sq. ft.) home. Central heat & air. Located on a nice 100x150 ft. lot. Established neighborhood close to all city amenities.

**Terms:** 10% down day of sale with balance due on or before May 31, 2010.  
This ad begins 10 day lead base paint inspection period.



**John E. Brown**  
Auctioneer  
Lic. No. 5900  
931-446-0797

**CRYE-LEIKE**  
**AUCTIONEERS**

1118 Nashville Hwy. • Columbia, TN

Crye-Leike of Nashville, Inc.  
Firm License #3826

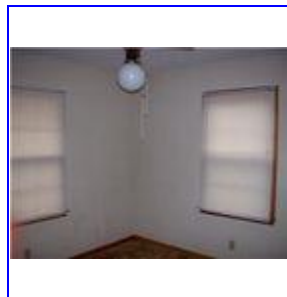
James E. Ables, Auctioneer  
Lic. No. 2050 • 931-540-8400



**James E. Hill**  
Auctioneer  
Lic. No. 6060  
931-540-8400

*All announcements made on auction day take precedence over printed material. Information deemed reliable, but not guaranteed.  
Crye-Leike Firm License Numbers: TN License #2774 - MS License #809F; #1473, #3758, #4923; #ACNR002328*

Date:	<b>SATURDAY MAY 1</b>	
Inspection Time:	<b>SALE DAY</b>	<b>SEE PHOTOS BELOW</b>
Location & Directions:	<b>SEE FLIER</b>	
Description:	<b>SEE FLIER</b>	
Terms:	<b>SEE FLIER</b>	
Referring Agent:		
For More Info Contact:	<b>John E. Brown, Columbia Crye-Leike Auctioneer, Realtor 931-446-0797</b>	



**1102 Clearview Ave**

*All announcements made on auction day take precedence over printed material. Information deemed reliable, but not guaranteed.*  
 Crye-Leike Firm License Numbers: TN License #2774 - MS License #809F; #1473, #3758, #4923; #ACNR002328

