

# CRYE-LEIKE

AUCTIONS ®

Find more auctions at <http://auctions.crye-leike.com>

## ABSOLUTE AUCTION

**2136 STROMBURY DRIVE, HERMITAGE  
4 BEDROOM BASEMENT HOME w/ 2,665 sq.ft.**



<b>Date:</b>	<b>SATURDAY, OCTOBER 23rd @ 11:00 A.M.</b>
<b>Inspection Time:</b>	Saturday, October 23rd @ 10:00
<b>Location &amp; Directions:</b>	From Nashville take I-40 East, Exit 226B, Follow Old Hickory Blvd, turn Right onto Andrew Jackson, Right onto Old Lebanon Dirt Rd, Right on Tulip Grove Rd, Right into Camden Woods onto Strombury Drive - Home is on the left
<b>Description:</b>	<p>Spacious 4 bedroom, 3 bath home built in 1990. Offering 2,665 sq.ft. w/ an open floorplan with vaulted ceilings, neutral décor, gas fireplace, luxurious master suite on main level w/ garden tub &amp; separate shower, large secondary rooms, Formal Dining Rm, Large Kitchen with Breakfast area. Finished Basement with Rec. Room &amp; Safe Room. 2 Car Garage, Scenic Backyard with mature trees, extended deck overlooking extensive landscaping &amp; more!</p> <p><b>PERSONAL PROPERTY/:</b> Bedroom Suite (King Sleep Number Bed, dual controls, Dresser, Nightstands &amp; Armoire), S. Bent Dining Rm Suite (table, 8 chairs, corner display &amp; jelly cupboard), 1 HD Flat Screen TV w/Sound System &amp; Stand, European Bookcase, Handmade Turkish Rug, Weber Gas Grill, Ducks Head Glass Top Patio Table w/ 4 Chairs &amp; side table, handmade wooden rocker, 2 Themed Wooden Gliders w/ matching ottoman, marble top table, deluxe leather office chair, "Lightning Guider" 5' wooden sled, &amp; Canon eos-iN camera body w/ 3 ultrasonic auto focus lenses (50mm fl.4, ef28-105 zoom f3.5-f4.5, ef100-300 zoom, f.5-f5.6) 1 speedlite 220EX flash (all in original boxes, plus other misc. Carl Zeiss lenses.</p>

*All announcements made on auction day take precedence over printed material. Information deemed reliable, but not guaranteed.  
Crye-Leike Firm License Numbers: TN License #2774 - MS License #809F; #1473, #3758, #4923; #ACNR002328*

**Terms:**

**PERSONAL PROPERTY TERMS:** Cash or good check for full amount of purchase.

**BANK TERMS:** 20% Cash down, 10 yr. amortization, principle payments annually, interest payable monthly. Interest 6.0% 1st year, then adjusted annually to prime + 1.00%. \$350.00 Loan fee. Call Gary Smith with Wilson Bank & Trust at 615-754-0600 or Doug Gold at 615-885-0040 for further information.

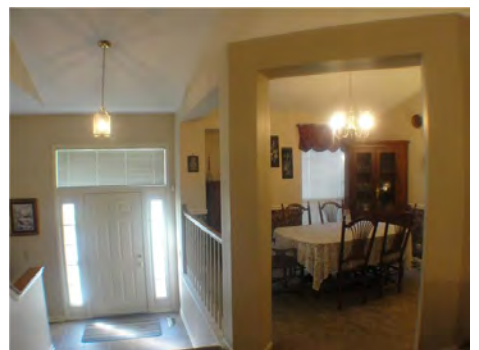
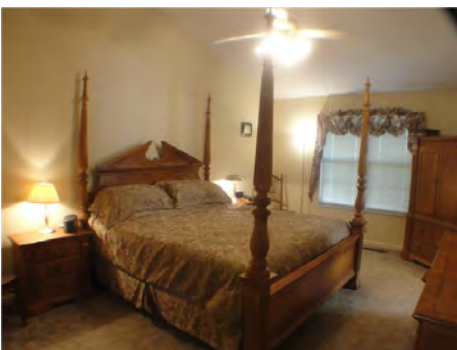
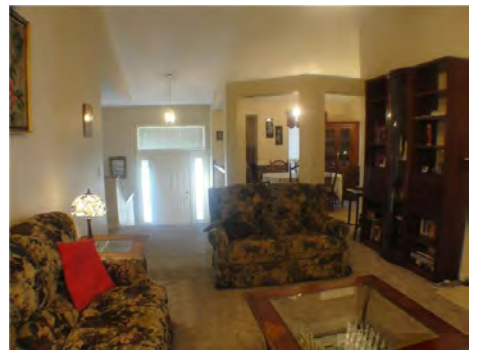
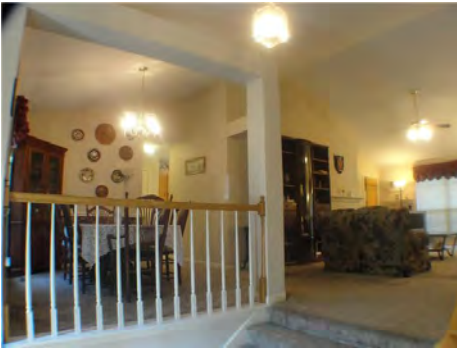
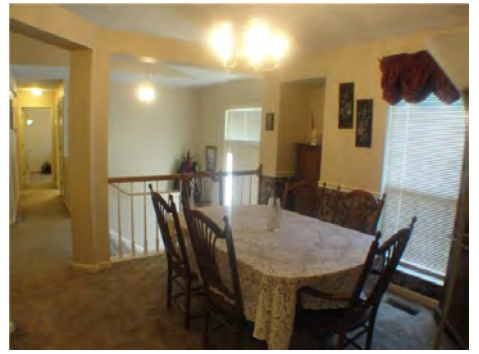
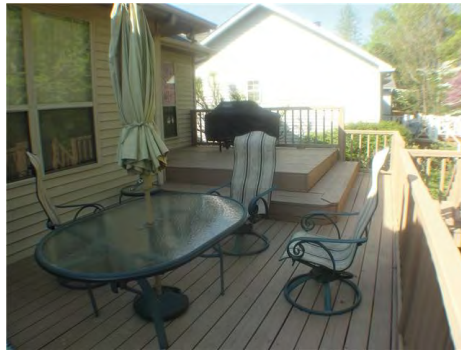
**SALE DATE TERMS:** \$10,000 Down, Non-Refundable cash or good check and sign purchase contract. Title Insurance provided by seller and taxes pro-rated. **Special Note:** Any potential buyers will be allowed to have the home inspected 10 days prior to sale at their expense. On sale date, you waive your right to this inspection.

**3% Realtor Referral — Agents Must Pre-Register 48 Hours in Advance and be present at the Auction**

*For More Info  
Contact:*

**Jimmy Deatrick, Auctioneer  
615-754-8999 ext 4068**





## Photos of the Personal Property Items That Will Be Auctioned Are Below

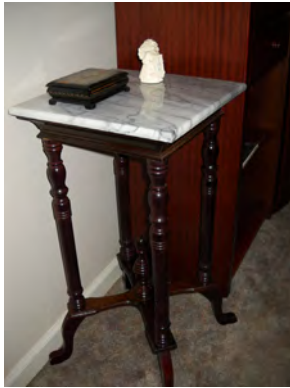
*All announcements made on auction day take precedence over printed material. Information deemed reliable, but not guaranteed.*  
Crye-Leike Firm License Numbers: TN License #2774 - MS License #809F; #1473, #3758, #4923; #ACNR002328



All announcements made on auction day take precedence over printed material. Information deemed reliable, but not guaranteed.  
Crye-Leike Firm License Numbers: TN License #2774 - MS License #809F; #1473, #3758, #4923; #ACNR002328



All announcements made on auction day take precedence over printed material. Information deemed reliable, but not guaranteed.  
Crye-Leike Firm License Numbers: TN License #2774 - MS License #809F; #1473, #3758, #4923; #ACNR002328



*All announcements made on auction day take precedence over printed material. Information deemed reliable, but not guaranteed.*  
Crye-Leike Firm License Numbers: TN License #2774 - MS License #809F; #1473, #3758, #4923; #ACNR002328